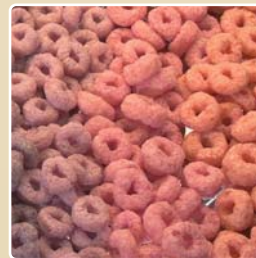
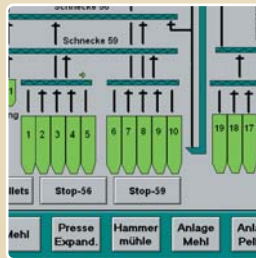
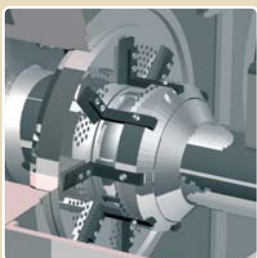
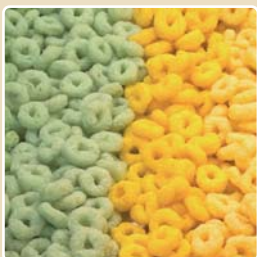
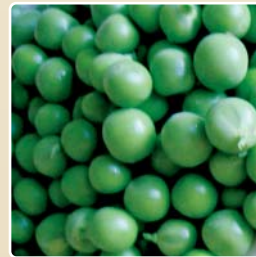


Machines and Plants for the Food Industry



SCHULE Process Engineering for Food Processing



Cereals

- Machines and plants for the production of:
 - Oat flakes
 - Barley flakes
 - Pearl barley
 - Buckwheat groats
 - White rice / brown rice
 - Breakfast cereals
 - Couscous



Pulses

- Machines and plants for the production of:
 - Split/dehulled peas
 - Split/dehulled lentils
 - Classified/polished beans
 - Dehulled chickpeas
 - Dehulled faba beans



Tea

- Machines for the production of:
 - Tea blends
 - Aromatized teas
 - Pellets and crumbles from tea dust



Cleaning

Cleaning of paddy, cereals, pulses, oilseeds and spices.



Protein Shifting

- Machines and plants for processing of pulses and cereals for the production of:
 - Protein concentrate
 - Starch concentrate
- for the nutrient and feed industries



Bioethanol



- Machines and plants for the production of:
 - Dehulled cereals before the moist process



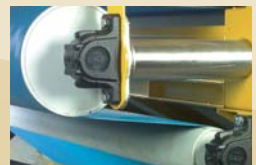
Sorting

Sorting of cereals, pulses, oilseeds and spices.



Dampening

Dampening for hygienization, stabilization and starch modification. Reduction of inhibitors in cereals and spices.



Drying

Drying of cereals, pulses and flakes.



Dehulling

Dehulling of cereals, pulses, oilseeds and spices.



Flaking

Flaking for the production of food, instant and melting flakes.



Hygienization

Short-time treatment for hygienization and reduction of inhibitors in oilseeds and legumes.



Spices



Machines for the production of:

- Dehulled pepper
- Dehulled coriander



Instant Food



- Nutrients
- Dietary supplements
- Instant flakes
- Instant soups

Stabilization

Stabilization of dehulled and polished product.

Spraying/Coating

Depending on the product requirement, liquids can be sprayed onto the product in a mass flow or introduced into the product under vacuum.



Oilseeds



Machines for the production of:

- Dehulled sunflower seeds for human nutrition and the oil industry
- Dehulled rape seeds for the oil industry
- Dehulled soybeans

Coffee Treatment and Roasting



- Machines and plants for:
- Treatment of green coffee
 - Production of roasted coffee
 - Production of ground coffee

Coarse Grinding/ Groat Production

Crushing, groating of buckwheat and pearl barley; flaking of oats.

Fine Grinding

Fine grinding of legumes, production of protein and starch concentrate by shifting.



Hydrothermal Processes



Machines and plants for the production of:

- Bulgur, buckwheat
- Spices (germ reduction)
- Quick-cooking beans
- Parboiled rice
- Instant rice
- Breakfast cereals
- Snacks, extruded products
- Modified starch

Pelleting

Shaping, cylindrical final products. Increase of bulk density and reduction of transport volume.

Extruding

Production of breakfast cereals and snacks from grain products.

From the Raw Product to the Final Product with Machines and Plants of the KAHL Group



Process Engineering

- Cleaning
- Sorting
- Dehulling
- Damping
- Flaking
- Drying
- Hygienizing
- Stabilizing
- Deactivating/inhibiting
- Coarse grinding/groating
- Fine grinding
- Pelleting
- Extruding
- Expanding
- Spraying
- Roasting



Raw Products

- Aniseed
- Black eye beans
- Black pepper
- Broken kernels
- Buckwheat
- Carob
- Cargo
- Coriander
- Dehulled barley
- Fennel
- Hazelnut
- Hempseed
- Hibiscus flowers
- Horse beans
- Instant rice
- Lentils
- Millet
- Mung beans
- Quinoa
- Paddy
- Parboiled cargo
- Peas
- Polished rice
- Rape seed
- Rice hulls
- Rice polishings
- Rye
- Sesame
- Soybeans
- Spelt wheat
- Sunflower seeds
- White rice
- Wheat
- Wheat bran



Intermediate/Final Products

- Camomile + additives
- Carrot granulate
- Cereals
- CMC
- Coarse bulgur
- Coffee waste
- Coffee extraction meal
- Coffee cherries
- Coffee cherry husks
- Cornflakes
- Cracknel/chocolate
- Crispbread
- Egg powder pellets
- Fine bulgur
- Maize
- Maize meal
- Maize grits
- Maize bran
- Maize cobs
- Olives/citrus pulp
- Parboiled rice
- Pea meal (protein shifted)
- Pea meal (starch shifted)
- Shellfish flesh extract
- Snackfood II
- Snack mixture
- Sorghum/millet
- Tomato powder
- Various tea blends
- Vitamin mixture
- Waffles
- White rice II
- Wheat
- Wheat gluten
- Wheat bran
- Wheat + maize
- Wheat + maize + barley
- Wheat meal + additives



AMANDUS KAHL GmbH & Co. KG
F. H. SCHULE Mühlenbau GmbH
NEUHAUS NEOTEC
Maschinen- u. Anlagenbau GmbH

Dieselstrasse 5-9
 D-21465 Reinbek / Hamburg
 Telephone: +49 (0)40 727 71-0
 Fax: +49 (0)40 727 71-100
 info@amandus-kahl-group.de

www.akahl.de