

## Counter Current Coarse Sifter

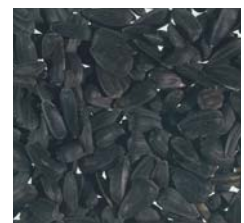
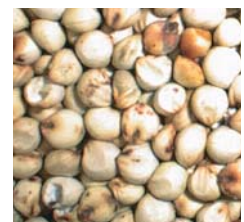
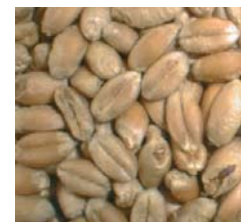
For the removal of husk particles, meal and dust or for efficient cooling of the rice between the pearling passes



Counter Current Coarse  
Sifter Type 300



Counter Current  
Coarse Sifter Type 500



# Counter Current Coarse Sifter

## Description

The counter current coarse sifter is remarkable for the cylindrical shape of the aspiration chamber and extremely small space requirements. This unit has many potential applications and has proven its advantages, e. g. for the removal of husk particles, meal and dust or for efficient cooling of the rice between the pearling passes.

The counter current coarse sifter is readily accepted in all grain mills and plants processing rice, oats, barley, malt, millet, buckwheat, oil seeds and pulses as well as coffee and cocoa beans and similar products. Of late, the counter current coarse sifter was largely adopted in the chemical industry, primarily for control separating purposes, for the elimination of dust, abrasion fines and small particles of granulates prior to their further processing.

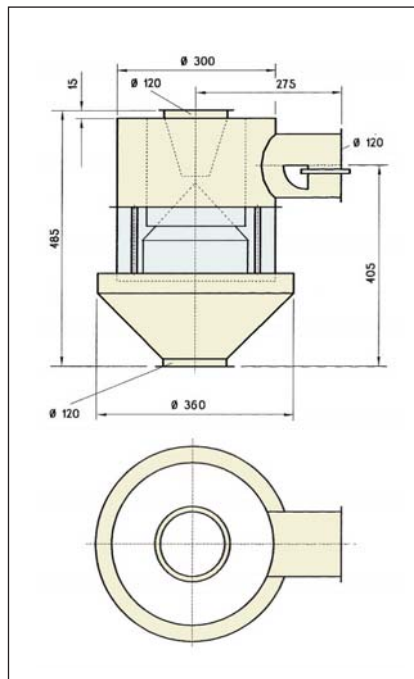
For these applications, the unit is available, apart from the basic version in standard steel, also in stainless steel or with coatings determined for each particular task. In addition, special constructions are available, which permit installation of a filter for cleaning the suction air or application of blanketing gas.

## Function

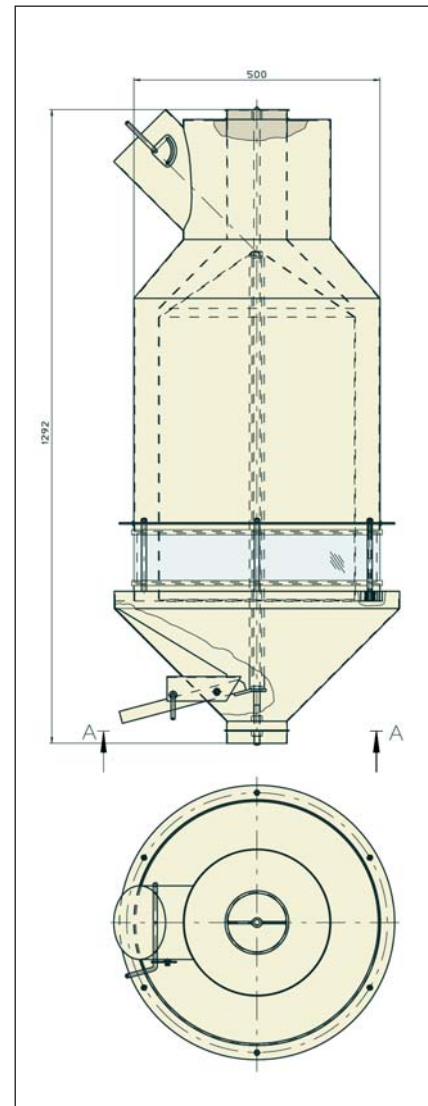
The material to be sifted enters the machine through the central feed opening and is evenly dispersed within the aspiration chamber by means of a cone with easily adjustable height. By regula-

ting the gap between feed pipe and dispersion cone, the quantity of feed stock is controlled. The dust-proof glass cylinder surrounding the aspiration chamber permits observation of the sifting effect. An air regulating device in the suction spout of the counter current coarse sifter serves to adjust the air volume to the requirements of the varying products.

## Inlet and outlet according to Jacob piping system



Counter Current Coarse Sifter Type 300



Counter Current Coarse Sifter Type 500

Technical data		Capacity per hour/kg*			Suction air	Overall dimensions		Shipping data		
Type	Inner ø mm	Rice	Pulses	Oats/ barley	m <sup>3</sup> /min	Length mm	Width mm	Net kg	Gross kg	Cubage m <sup>3</sup>
300	300	1800	1675	1575 -1675	10	485	360	17	25	0.1
500	500	3000	2800	2700	20	1292	580	60	75	0,5

\* The capacity depends on the specific gravity of the material to be handled, its pourability and the requirements with regard to separation degree.



F. H. SCHULE Mühlenbau GmbH

Dieselstraße 5-9  
D - 21465 Reinbek / Hamburg  
Phone: +49 (0)40 7 27 71 - 0  
Fax: +49 (0)40 7 27 71 - 710

schule@amandus-kahl-group.de

[www.schulefood.de](http://www.schulefood.de)

