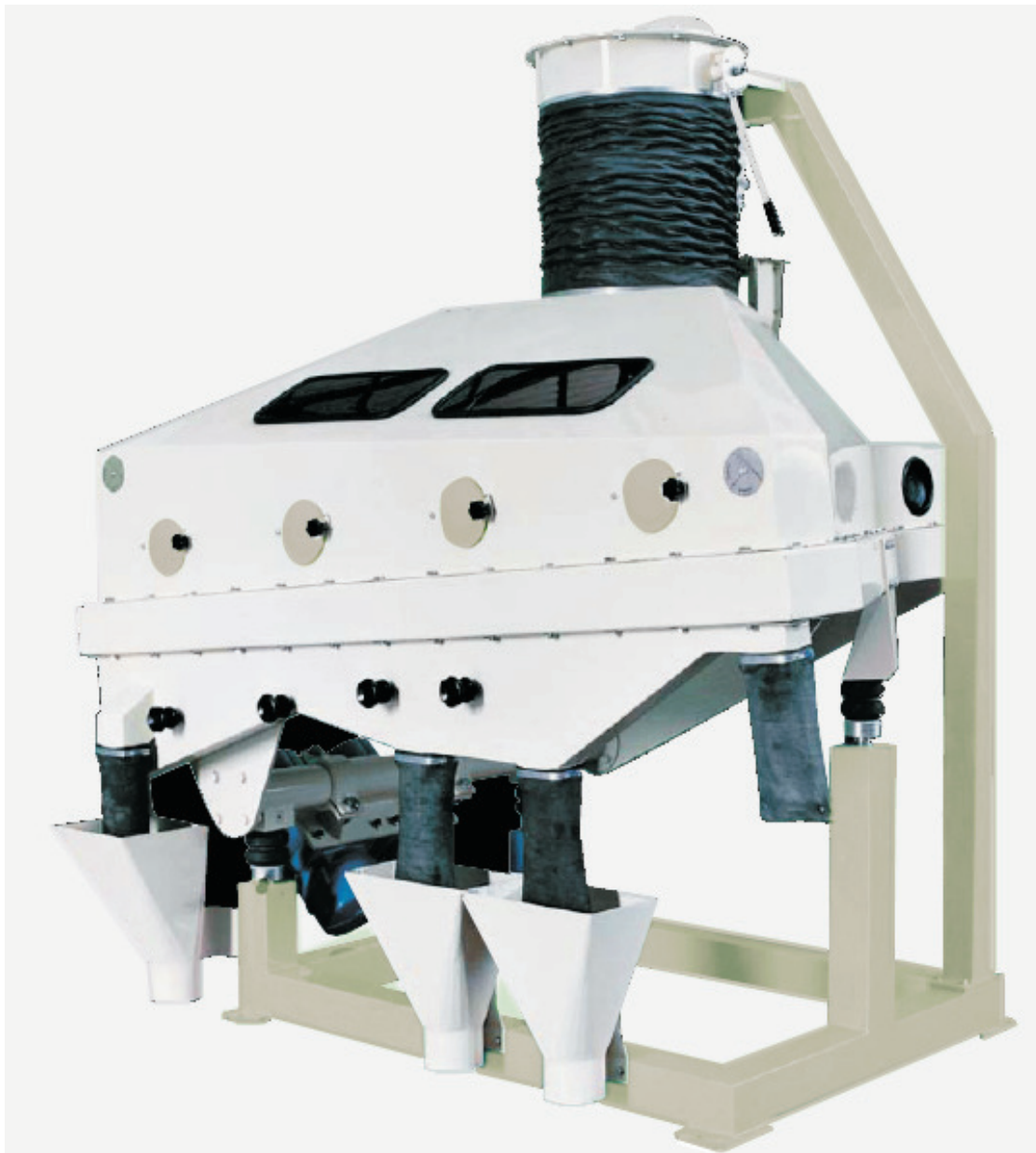


Gravity Separator Type GW 6

For separation of cereals and pulses
by different specific weight



Mode of operation

The Gravity Separator GW6 is used in the classification and the separation of granular products, crushed corn germ and wheat semolina, from tiny grains, ergot and stones. The feed bin, with band-controlled dosage, allows the inlet of the granular product, which is uniformly distributed on the inclined selection table. Inside the machine, the product, carried in suspension by an ascending current generated by an

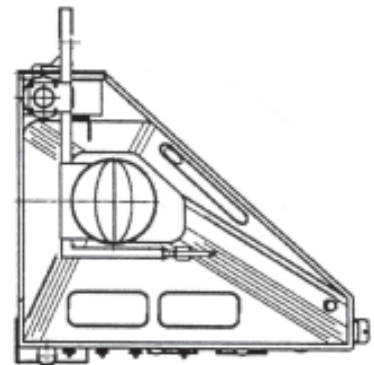
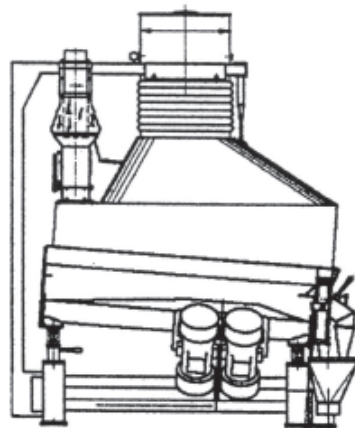
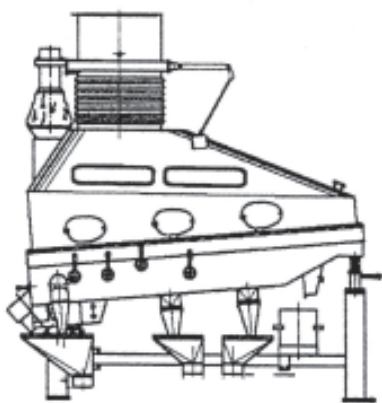
external aspirator, moves towards the outlet is freed from dust and lighter particles. The specific slope of the table allows the gradual formation of regular flows, which are divided by mobile bands into differentiated outlets. Any stones present, not being carried by the air cushion, are pushed towards the outlet placed in the upper part of the machine and are eliminated.

Advantages

- Simple adjustment of the desired separation effect
- Simple and easy maintenance
- Vacuum system

Specification

Capacity:	2,5 t/h (depending on product)
Aspiration requirement:	7200 - 8400 m ³ /h
Vibrator:	2 x 0,68 kW



F.H. SCHULE Mühlenbau GmbH
Dieselstraße 5-9
D - 21465 Reinbek / Hamburg
Phone +49 (0) 40 7 27 71 - 700
Fax +49 (0) 40 7 27 71 - 710

schule@amandus-kahl-group.de
www.schulerice.de

