

Destoner ST

High-capacity machine for separating heavy particles, such as stones, lumps of soil, mud balls, magnetic and non-magnetic metals



Destoner ST

Types

	Capacity paddy (t/h)	Capacity heavy grain (t/h)	Motor (kW)	Net weight (kg)	Gross weight (kg)	Cubage (m ³)
ST - 1	3	4.5	0.68	250	350	2.4
ST - 2	5	9.0	0.68	300	400	4.5
ST - 3	8	14.0	0.68	460	550	6.5

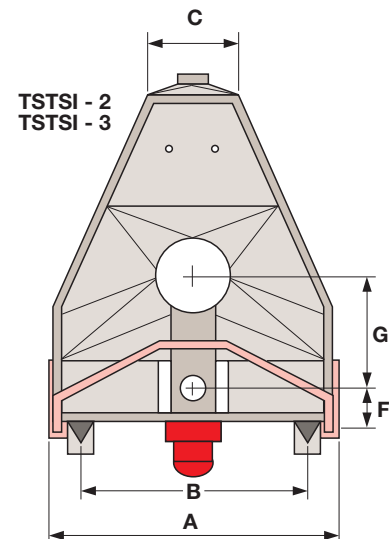
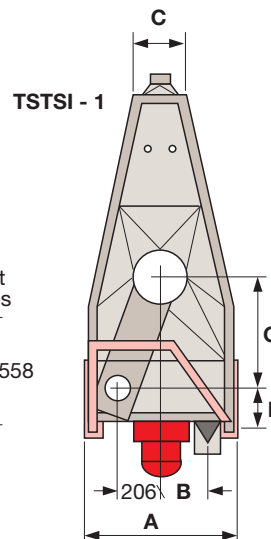
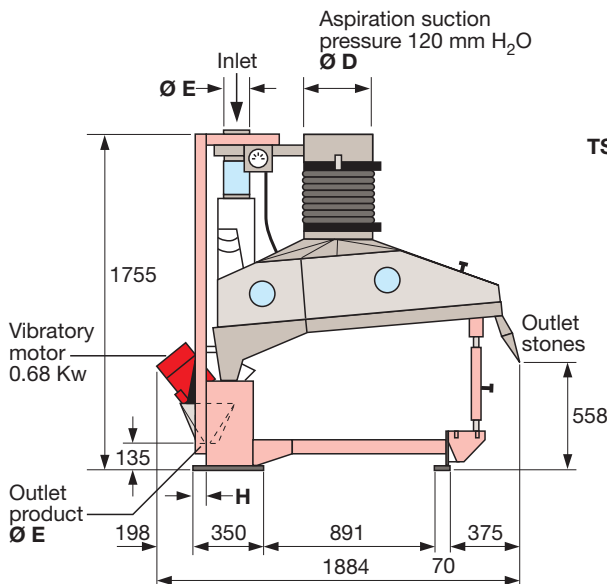
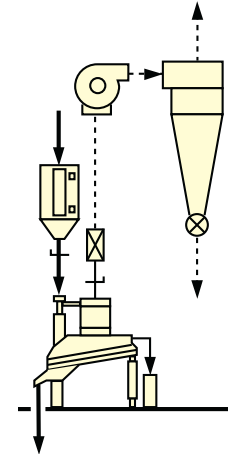
Function

The ST Destoner is used to continuously eliminate stones and heavy fragments from a flow of granular product.

The feed bin, with band-controlled dosage, allows the inlet of the granular product into the machine. The product, uniformly distributed by the vibration of the inclined selection table, is carried in suspension by an ascending current, generated by an external aspirator, which allows it to flow towards the lower part.

The heavier parts, under the influence of the particular configuration of the selection sieve surface, move towards the outlet placed at the upper part of the machine, while the lighter particles are aspirated by the ascending current and thus carried on to successive processes.

- Motorised vibrator: 0.68 kW
- Vacuum: 120 mm water column



Sizes

	Air m ³ /h	A mm	B mm	C mm	Ø D mm	Ø E mm	F mm	G mm	H mm	Weight kg	Volume m ³
ST - 1	2400	720	220	240	250	120	157	522	65	250	2.4
ST - 2	4800	1380	1100	425	350	120	157	522	65	300	4.5
ST - 3	7200	1980	1420	1025	450	150	189	507	50	460	6.5